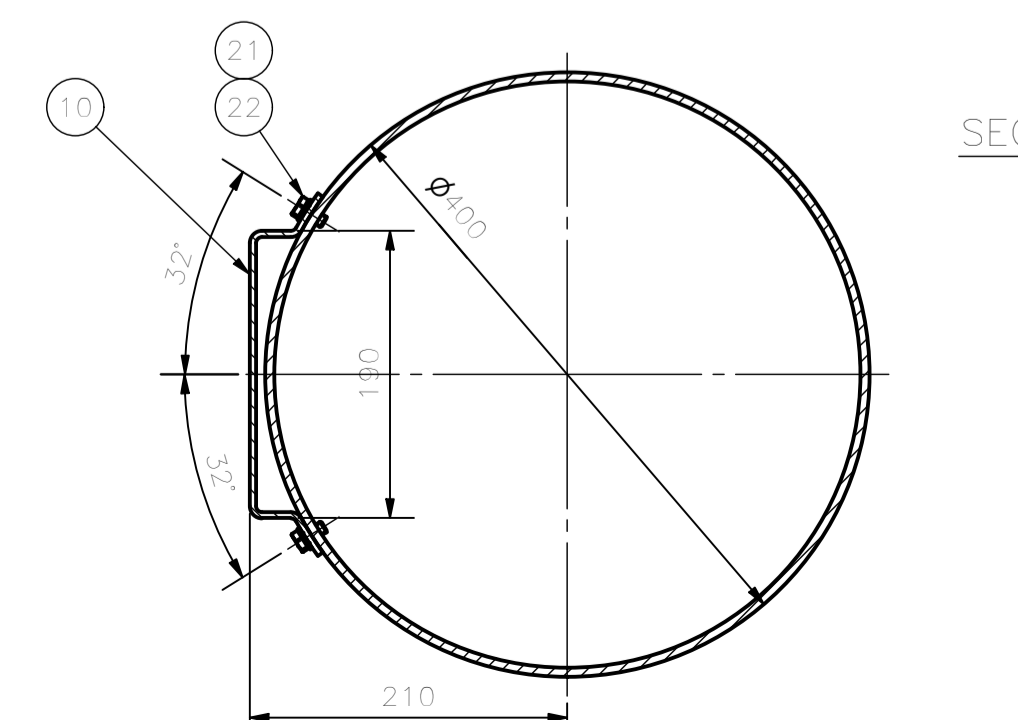
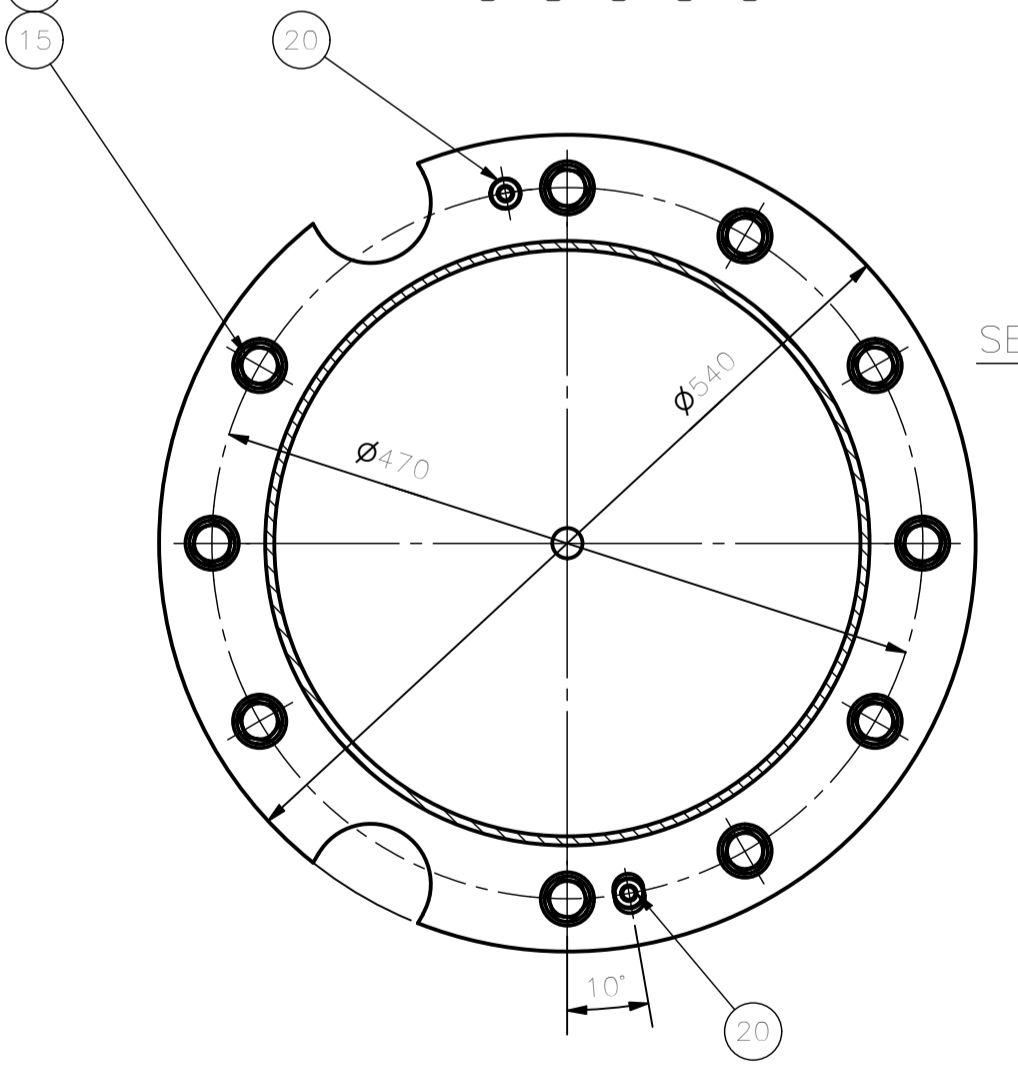
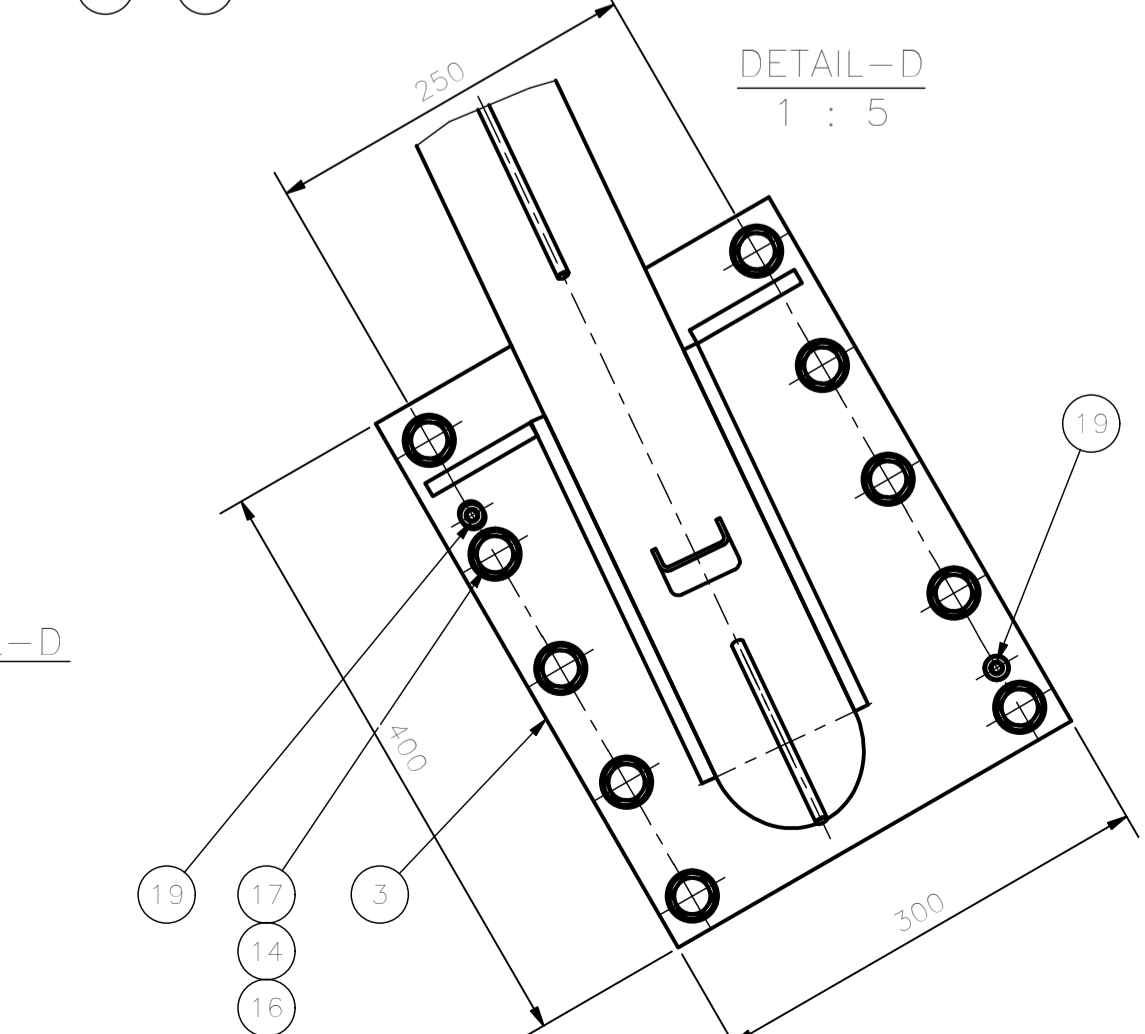
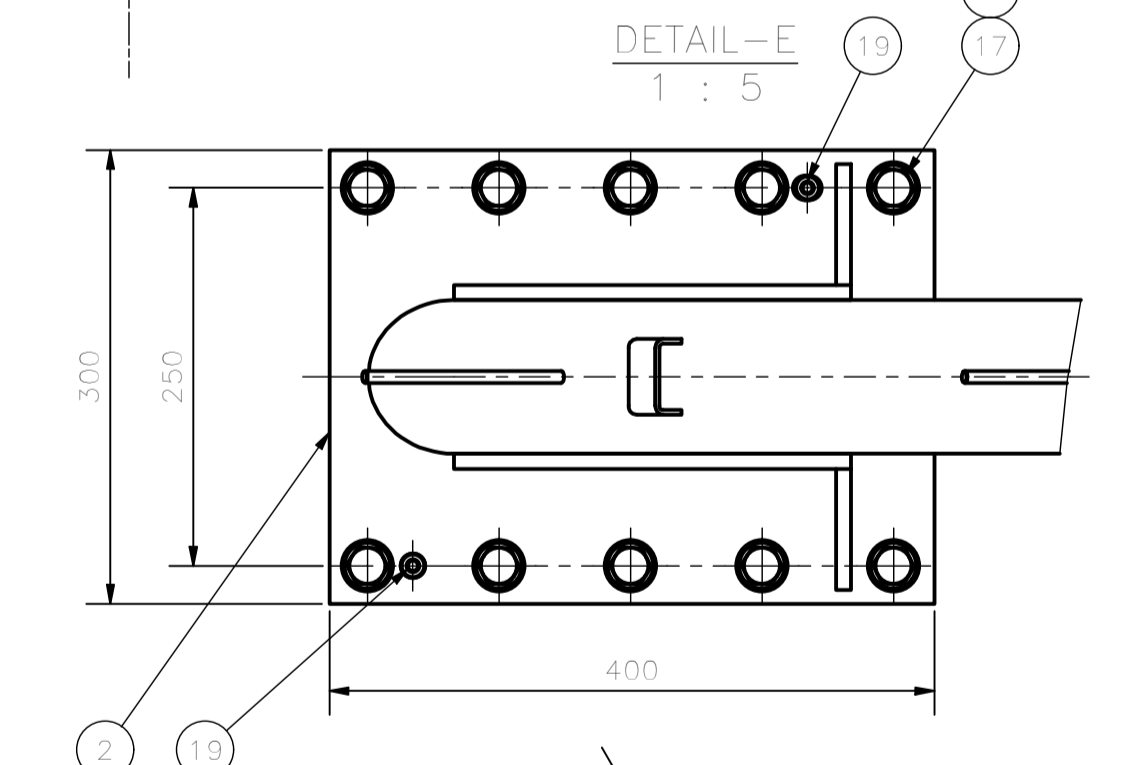
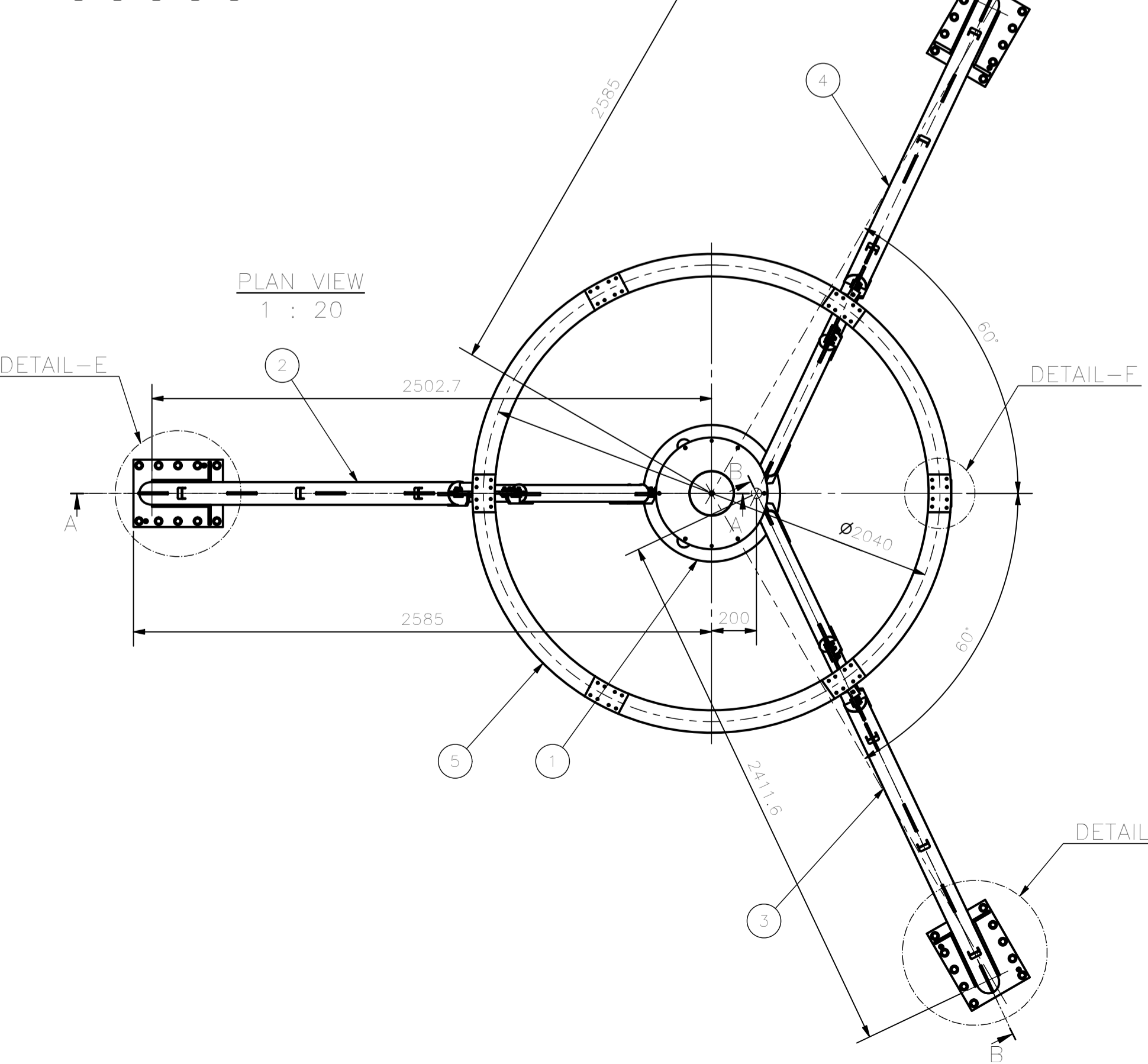


NOTES:
 1) SEE DRAWINGS 7120-000-00 TO ASSEMBLY CORRECTLY.
 2) APPLY TORQUE TO BOLTS AS PER STANDARD CODES AND MARK THE POSITION AFTER TIGHTENING.



Item	Code	Description	Qty	Material	Mass
22	ISO 4017 - M8 x 16	Hexagon head screws	8	Cl. 8.8 Galv.	0,012 kg
21	ISO 7089 - 8	Plain washers	8	HV 200 Galv.	0,002 kg
20	ISO 8735 - 20 x 40	Pin with crown and internal thread, through hardened steel	2	ST	0,081 kg
19	ISO 8735 - 16 x 35	Pin with crown and internal thread, through hardened steel	6	ST	0,046 kg
18	ISO 8735 - 12 x 26	Pin with crown and internal thread, through hardened steel	15	ST	0,019 kg
17	ISO 4014 - M16 x 80	Hexagon head bolt - product grades A and B	30	Cl. 8.8 Galv.	0,162 kg
16	ISO 4032 - M16	Hexagon nuts	30	Cl. 8 Galv.	0,039 kg
15	ISO 4017 - M16 x 40	Hexagon head screws	10	Cl. 8.8 Galv.	0,100 kg
14	ISO 7089 - 16	Plain washers	70	HV 200 Galv.	0,012 kg
13	ISO 4017 - M10 x 35	Hexagon head screws	60	Cl. 8.8 Galv.	0,032 kg
12	ISO 4032 - M10	Hexagon nuts	60	Cl. 8 Galv.	0,010 kg
11	ISO 7089 - 10	Plain washers	120	HV 200 Galv.	0,004 kg
10	7125-000-11-00	Electrical Box Hanger	2	Construction steel S235J2G3 EN10027	1,782 kg
9	7123-000-09-00	Windbracing 04	1	Construction steel S355J0 EN10027	11,833 kg
8	7123-000-08-00	Windbracing 03	1	Construction steel S355J0 EN10027	19,362 kg
7	7123-000-07-00	Windbracing 02	2	Construction steel S355J0 EN10027	20,144 kg
6	7123-000-06-00	Windbracing 01	2	Construction steel S355J0 EN10027	12,344 kg
5	7123-000-05-00	Top ring	1	Welded construction steel S355J2G3 EN10027	122,210 kg
4	7123-000-04-00	Mast leg3	1	Welded construction steel S355J2G3 EN10027	87,233 kg
3	7123-000-03-00	Mast leg2	1	Welded construction steel S355J2G3 EN10027	84,541 kg
2	7123-000-02-00	Mast leg1	1	Welded construction steel S355J2G3 EN10027	84,396 kg
1	7123-000-01-00	Central Tube	1	Welded construction steel S355J2G3 EN10027	213,801 kg

		EIE GROUP via Torino 151A - Mestre Venezia - 30172 - ITALY tel. +39 041 5317906 - www.eie.it			
ASTRI mini-array - CTA Small Size Telescope prototypes					
Material:	Surface:	Tolerances according to: ISO 2768-1-m ISO 2768-2-k	Roughness:	Commissa/Job no.:	G0113
Status:	Mass: 703,57 kg	Date: 31/01/2017	Scale: 1:10	Naming: Electro Mechanics Optical Support Structure OSS Upper Structure	
Designed: 31/01/2017	Checked: 10/04/2018	Approved: 12/04/2018	Name: ACA	ABU	GPM
Drawing size: A1			Drawing N.:		7123-000-00-00
ALL RIGHTS BELONG TO EIE GROUP S.p.A. NO COPIES, REPRODUCTION OR DISSEMINATION ARE PERMITTED.			Filename:		OSS Upper Structure.lam
					Sheet: 1/1