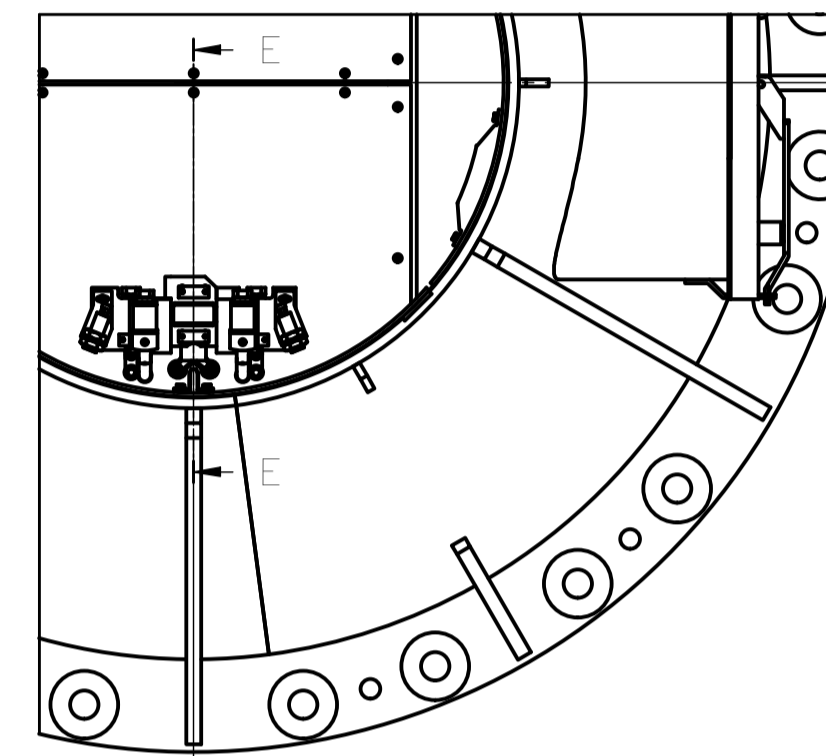
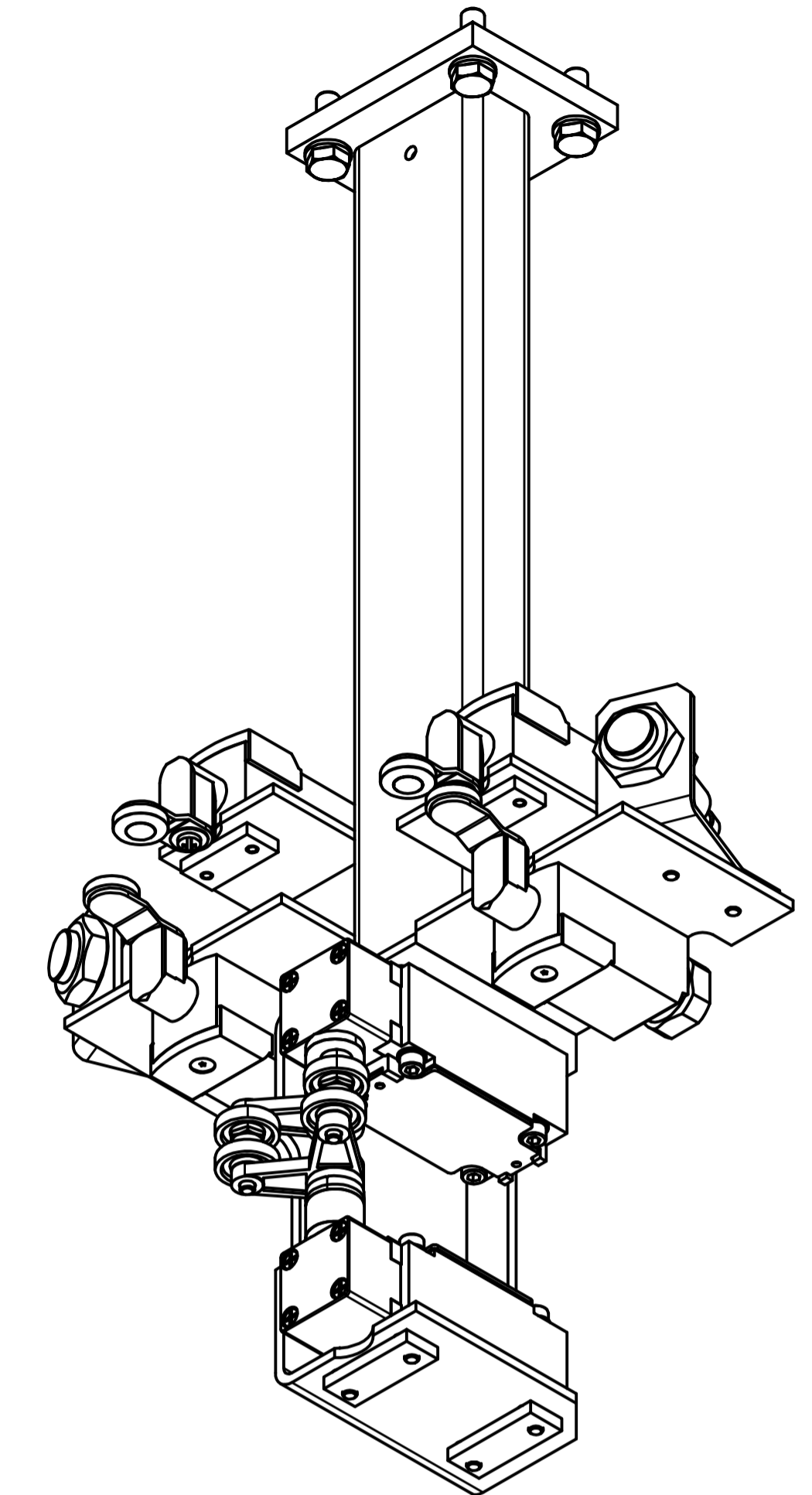
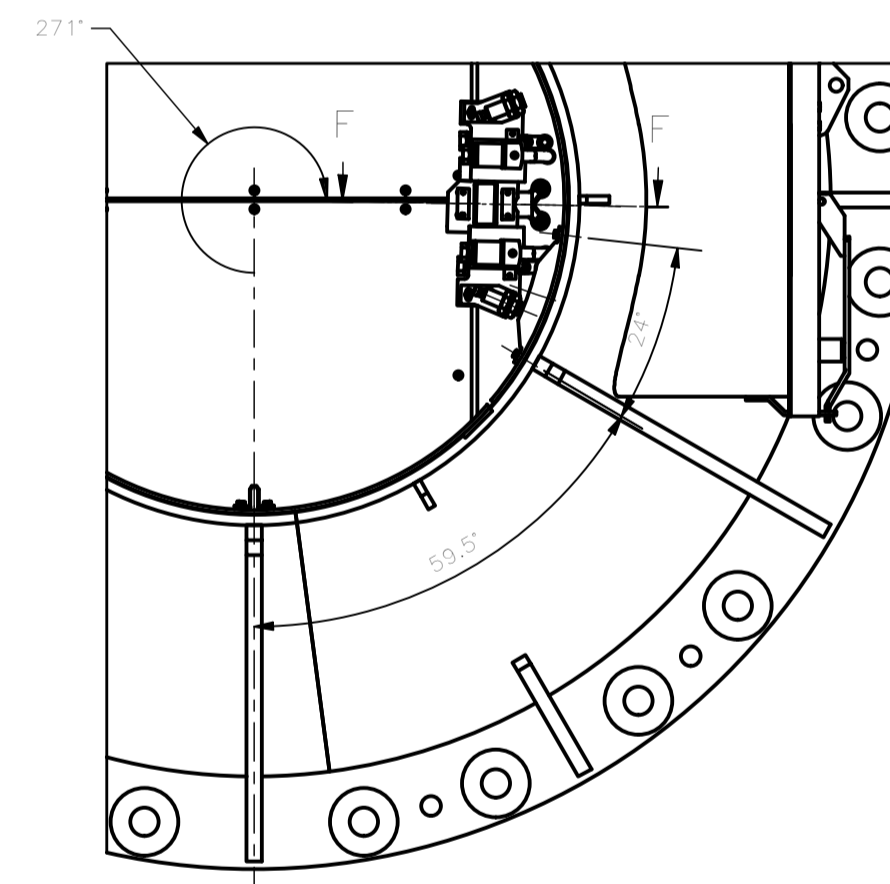


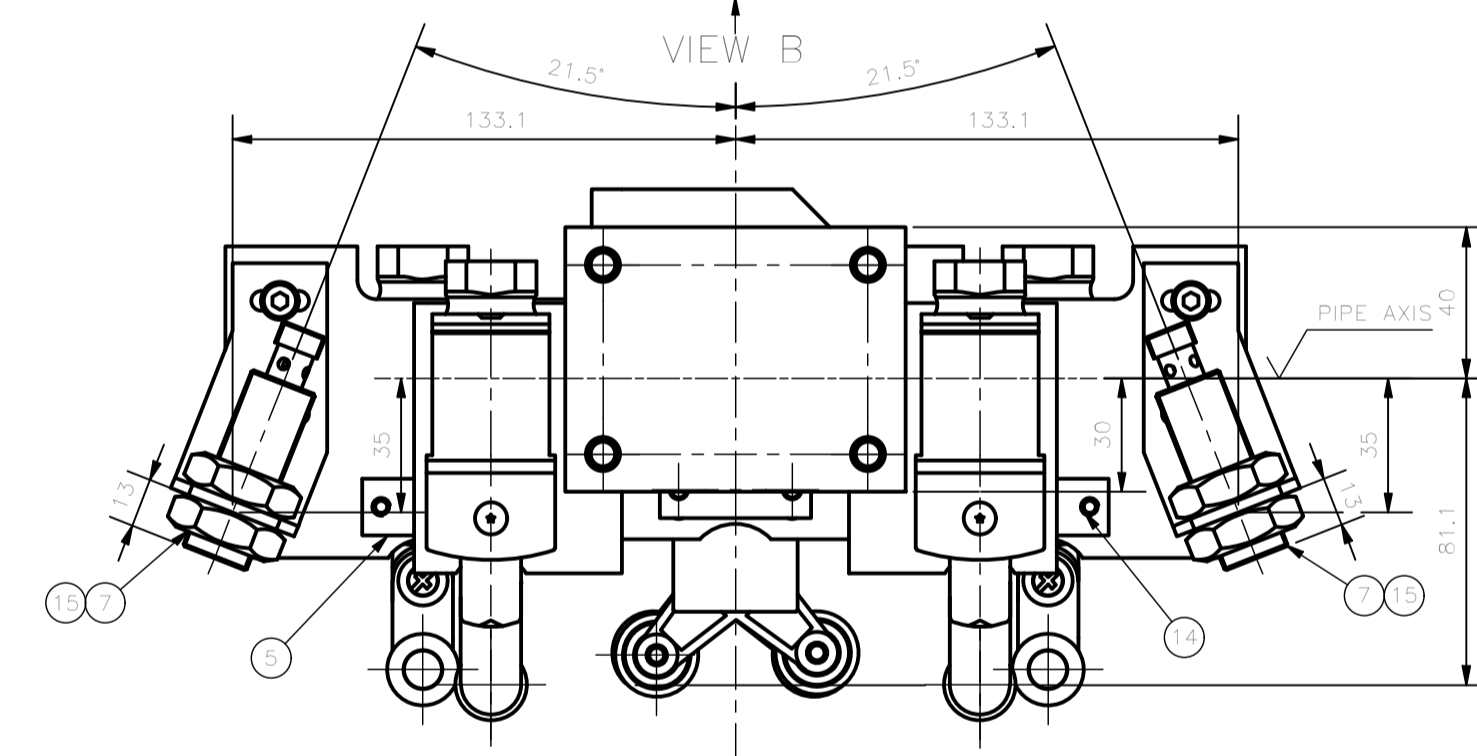
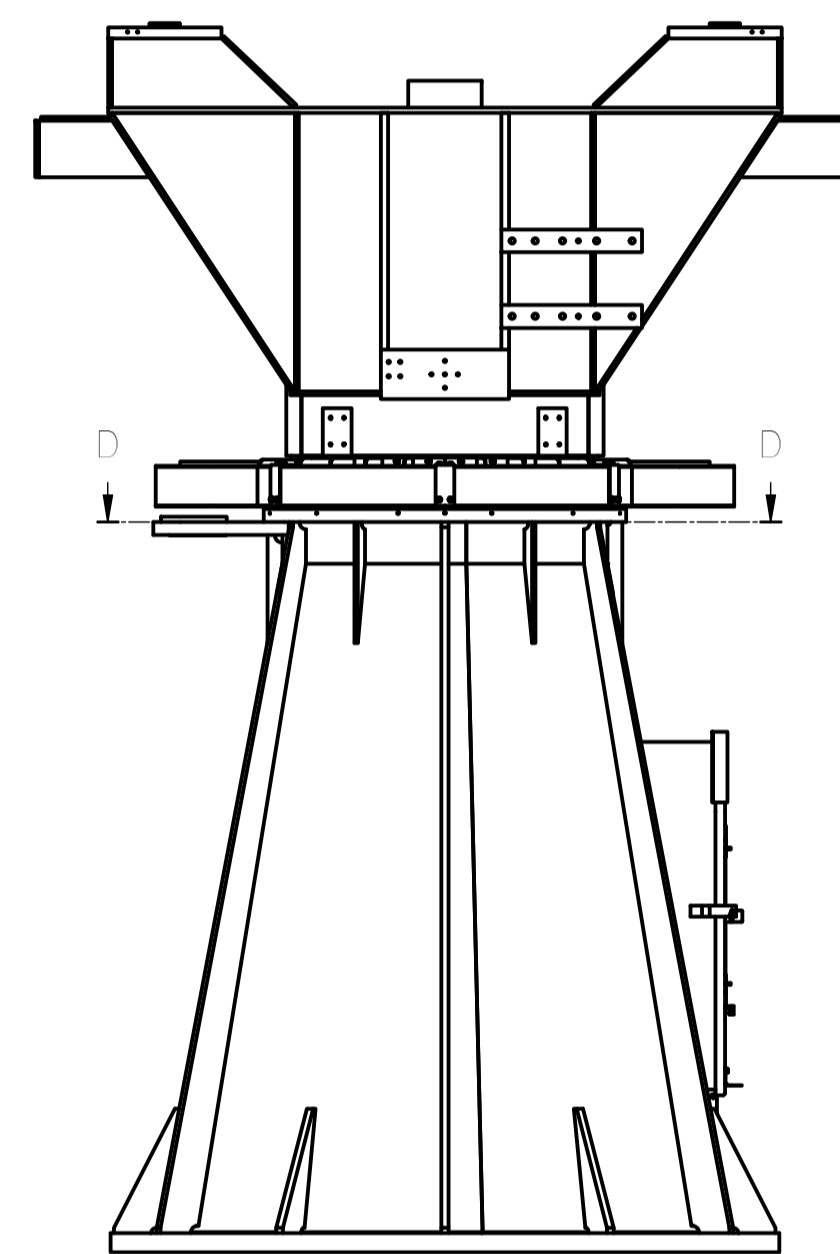
SECTION D-D
ROTATION
SWITCH ENGAGE
1 : 10



SECTION D-D
271° POWER OFF
SWITCH ENGAGE
1 : 10

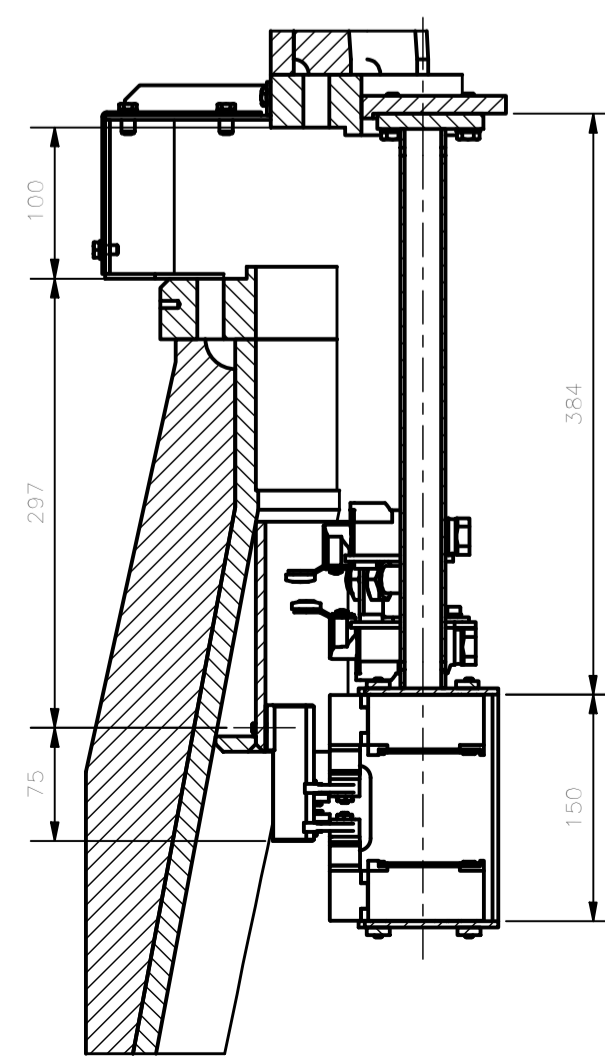


ISOMETRIC VIEW

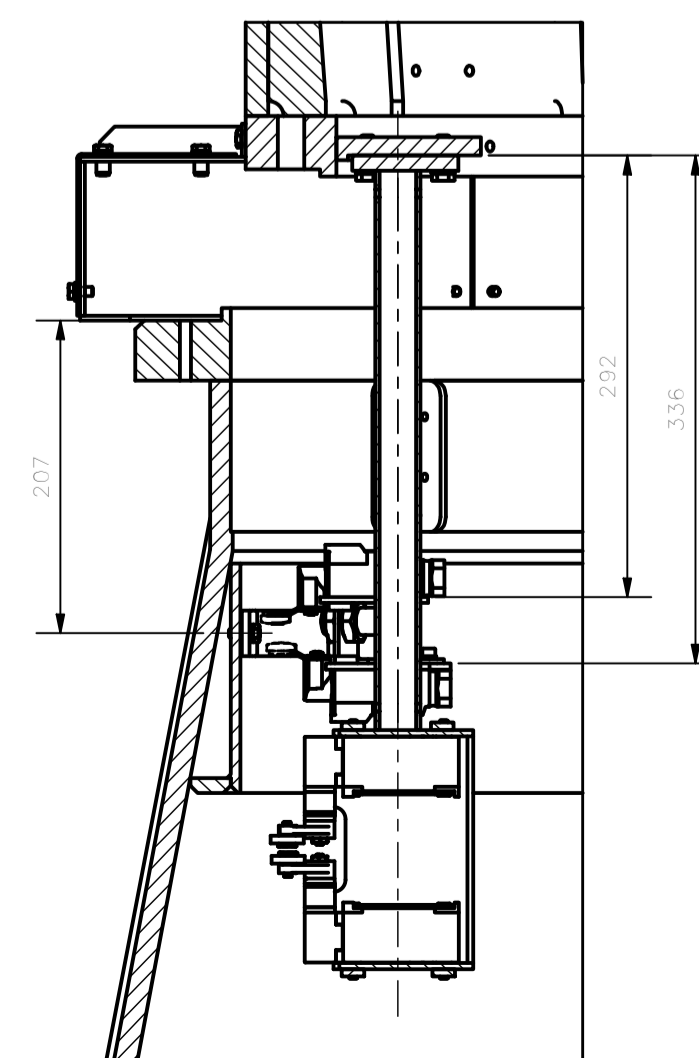


+271°
-271°
xx (EAST)

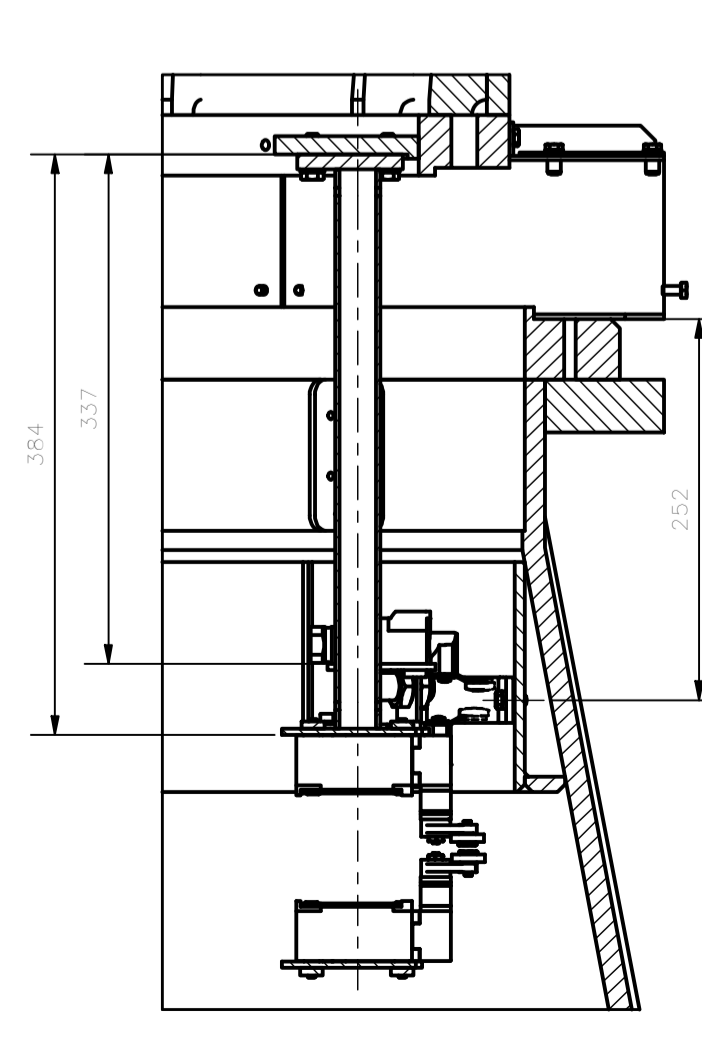
SECTION E-E
1 : 5



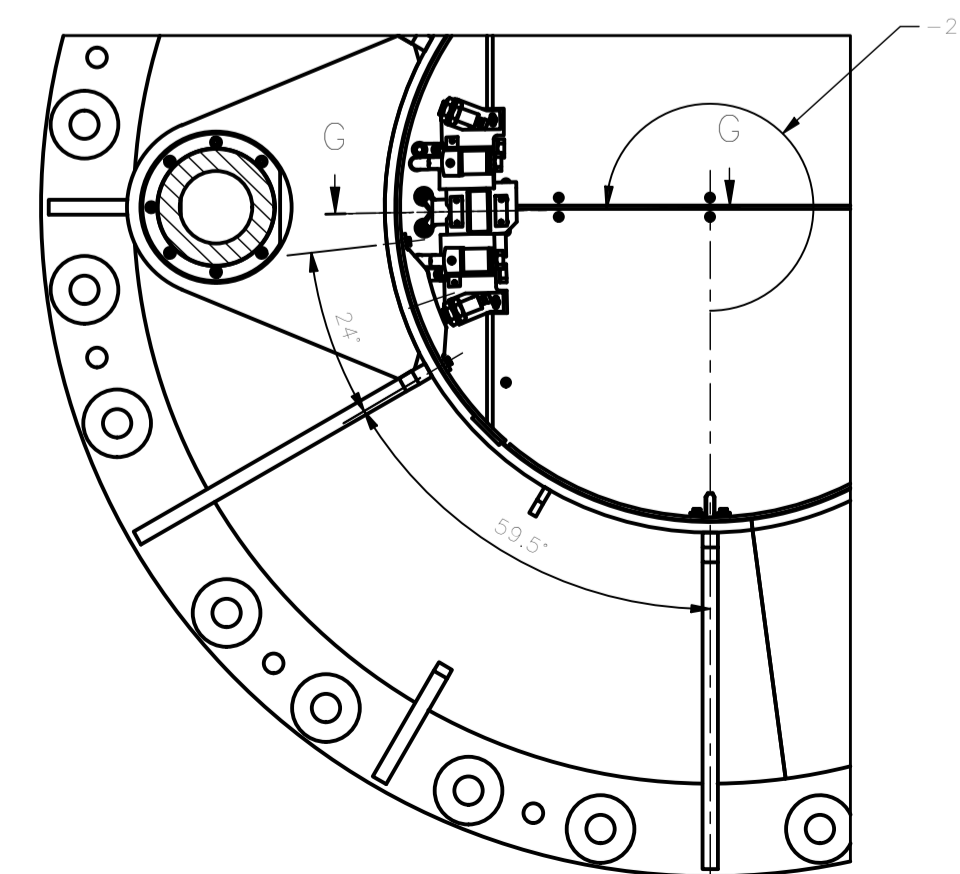
SECTION F-F
1 : 5



SECTION G-G
1 : 5



SECTION D-D
-271° POWER OFF
SWITCH ENGAGE
1 : 10



Item	Code	Description	Qty	Material	Mass
15	ISO 4035 - M18	Hexagon thin nuts	4	Cl. 8 Electro Galvanized	0,030 kg
14	ISO 4762 - M4 x 35	Hexagon Socket Head Cap Screw	8	Cl. 8,8 Electro Galvanized	0,004 kg
13	ISO 4017 - M8 x 25	Hexagon head screws	4	Cl. 8,8 Electro Galvanized	0,015 kg
12	ISO 7089 - 8	Plain washer	4	200 HV Electro Galvanized	0,002 kg
11	ISO 4762 - M5 x 10	Hexagon Socket Head Cap Screw	4	Cl. 8,8 Electro Galvanized	0,003 kg
10	ISO 7089 - 5	Plain washer	12	200 HV Electro Galvanized	0,000 kg
9	ISO 4762 - M5 x 45	Hexagon Socket Head Cap Screw	8	Cl. 8,8 Electro Galvanized	0,009 kg
8	ZCK-JD37H29-E09	AZ rotation switch Telemecanique	2		0,500 kg
7	NJ5-18GM50-A2-V1	inductive switch Pepperl & Fuchs	2		0,014 kg
6	XCS D3919P20	Safety switch with roller lever Telemecanique	4		0,075 kg
5	7113-510-05-00	Switches plate	4	Construction steel S355J0 EN10027	0,018 kg
4	7113-510-04-00	proximity switch mirrored support (see drawing D3113-510-02-00)	1	Construction steel S355J0 EN10027	0,078 kg
3	7113-510-03-00	Switches plate	4	Construction steel S355J0 EN10027	0,022 kg
2	7113-510-02-00	Proximity switch support	1	Construction steel S355J0 EN10027	0,078 kg
1	7113-510-01-00	switches support	1	Construction steel S355J0 EN10027	3,586 kg

		EIE GROUP via Torino 151A - Mestre Venezia - 30172 - ITALY tel. +39 041 5317906 - www.eie.it			
ASTRI mini-array - CTA Small Size Telescope prototypes		Material: Surface: Tolerances according to: ISO 2768-1-m ISO 2768-2-k		Roughness: Comma/Job no.: G0113	
Status: Mass: 5,54 kg Scale: 1:2		Date: Name:		Naming: Mount Assembly	
Designed: 04/04/2018 NAN		Checked: 16/04/2018 ABU		AZ & EL switches	
Approved: 17/04/2018 GPM		Drawing N.:		7113-510-00-00	
Drawing size: A1		Sheet: 1/1		ALL RIGHTS BELONG TO EIE GROUP S.p.A. NO COPIES, REPRODUCTION OR DISSEMINATION ARE PERMITTED.	
Filename: AZ switches.iam					