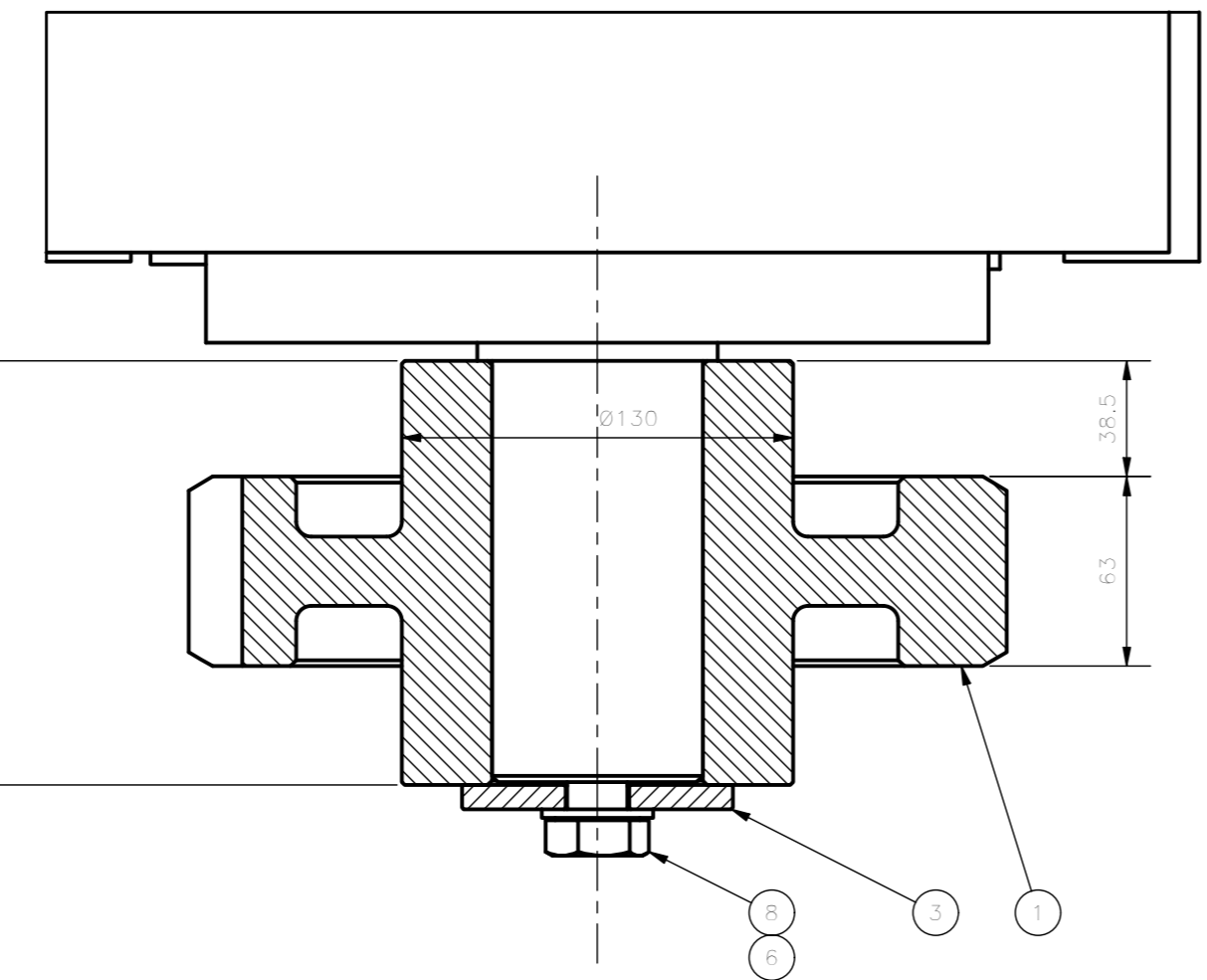


ISOMETRIC VIEW



SECTION B-B
1 : 2.5

Item	Code	Description	Q.ty	Material	Mass
10	ISO 4017 - M10 x 30	Hexagon head screws	4	CI 8,8 ISO 7980 galvanized	0,029 kg
9	ISO 7089 - 10	Plain washers - Normal series - Product grade A	4	HV 200 ISO 7980 galvanized	0,004 kg
8	ISO 4017 - M20 x 50	Hexagon head screws	1	CI 8,8 ISO 7980 galvanized	0,196 kg
7	ISO 4017 - M20 x 65	Hexagon head screws	4	CI 8,8 ISO 7980 galvanized	0,232 kg
6	ISO 7089 - 20	Plain washers	5	HV 200 ISO 7980 galvanized	0,017 kg
5	B14N1x7CxPxPxx	Motor HDT	1		16,000 kg
4	F 70 4 R 280.9 P90 H5 LH VV CC AC	Reduction Gear Bonfiglioli	1		444,191 kg
3	7113-311-03-00	AZ motor fixing plate	1	Construction steel S355J0 EN10027	0,377 kg
2	7113-311-02-00	AZ motor shim	2	Construction steel S355J0 EN10027	0,547 kg
1	7113-311-01-00	AZ motor pinion	1	Steel 42CrMo4 UNI EN 10083-1	26,295 kg

		EIE GROUP via Torino 151A - Mestre Venezia - 30172 - ITALY tel. +39 041 5317906 - www.eie.it			
ASTRI mini-array - CTA Small Size Telescope prototypes		Material: Surface: Tolerances according to: ISO 2768/1-m ISO 2768/2-k		Roughness: Comnessa/Job no.: G0113	
Status:		Mass: 489.30 kg		Scale: 1:5	
Date: 04.03.21		Name: NAN		Naming: Mount assembly	
Designed: 06/04/2018		Checked: 16/04/2018		AZ fork	
Approved: 17/04/2018		Drawing size: A2		AZ & EL drives	
Rev. Modification Name Date		Drawing no.: 7113-311-00-00		Sheet: 1/1	
ALL RIGHTS BELONG TO EIE GROUP Srl NO COPIES, REPRODUCTION OR DISSEMINATION ARE PERMITTED.		Filename: AZ Motor L.iam			