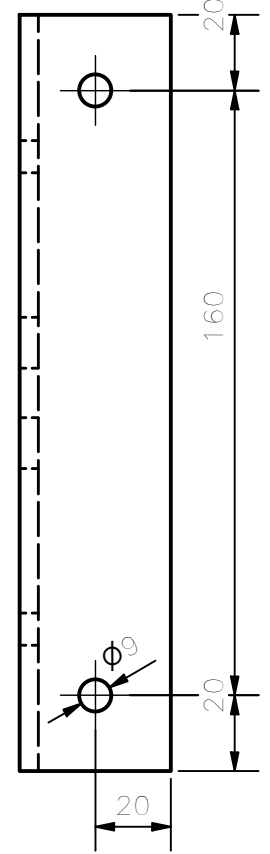
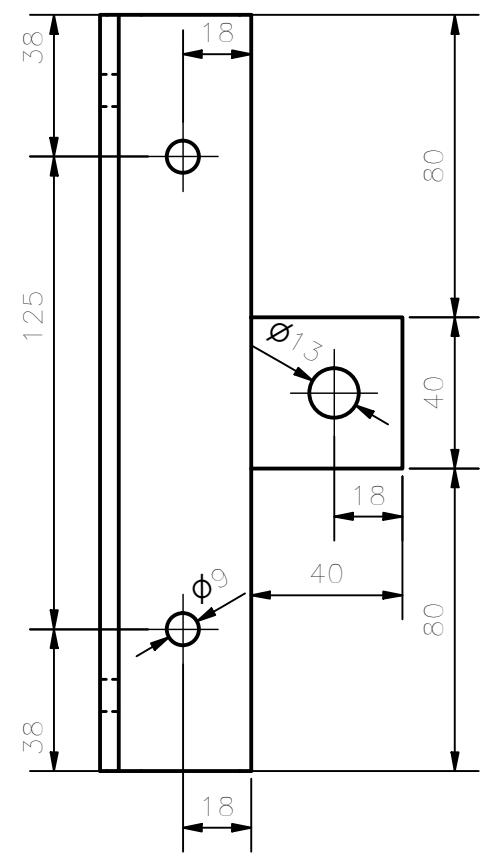
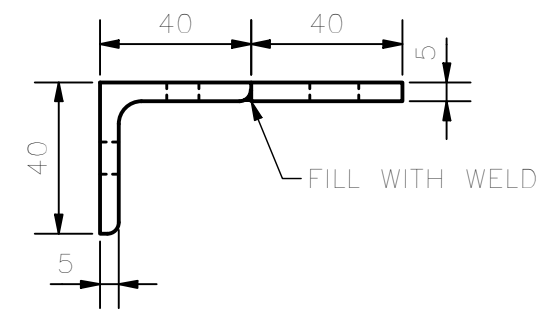
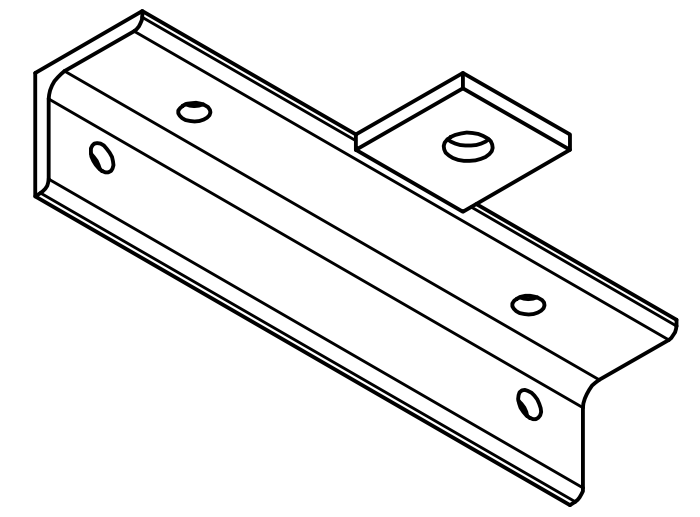


SALDATURE A 1/2 V TIPICHE
 GIUNTI A T AD ANGOLO RETTO
 TYPICAL 1/2 V WELDS
 RIGHT ANGLE T JOINT



ISOMETRIC VIEW
 1 : 2



NOTE:
 DEBURRING OF NOT DIMENSIONED EDGES ARE STRICTLY REQUIRED.
 THE SURFACES NOT MACHINED MUST BE COATED WITH PAINTING TYPE RAL 3016.

		EIE GROUP via Torino 151A - Mestre Venezia - 30172 - ITALY tel. +39 041 5317906 - www.eie.it				ASTRI mini-array - CTA Small Size Telescope prototypes	
Material: Construction steel S355J0 EN10027	Surface:	Tolerances according to: ISO 2768/1-m ISO 2768/2-k	Roughness:	Commissa/Job no.:			
Status:		Mass: 0,64 kg	Scale:	G0113			
		Date:	Name:	Naming: Mount Assembly AZ fork AZ fork structure AZ cable wrap support			
		Designed	20/01/2018	ACA			
		Checked	21/02/2018	ABU			
		Approved	21/02/2018	GPM			
		Drawing size:	A3		Drawing N.		Sheet:
				7113-100-05-00		1 / 1	
ALL RIGHTS BELONG TO EIE GROUP Srl NO COPIES, REPRODUCTION OR DISSEMINATION ARE PERMITTED.				Filename: AZ Cable wrap support.ipt			