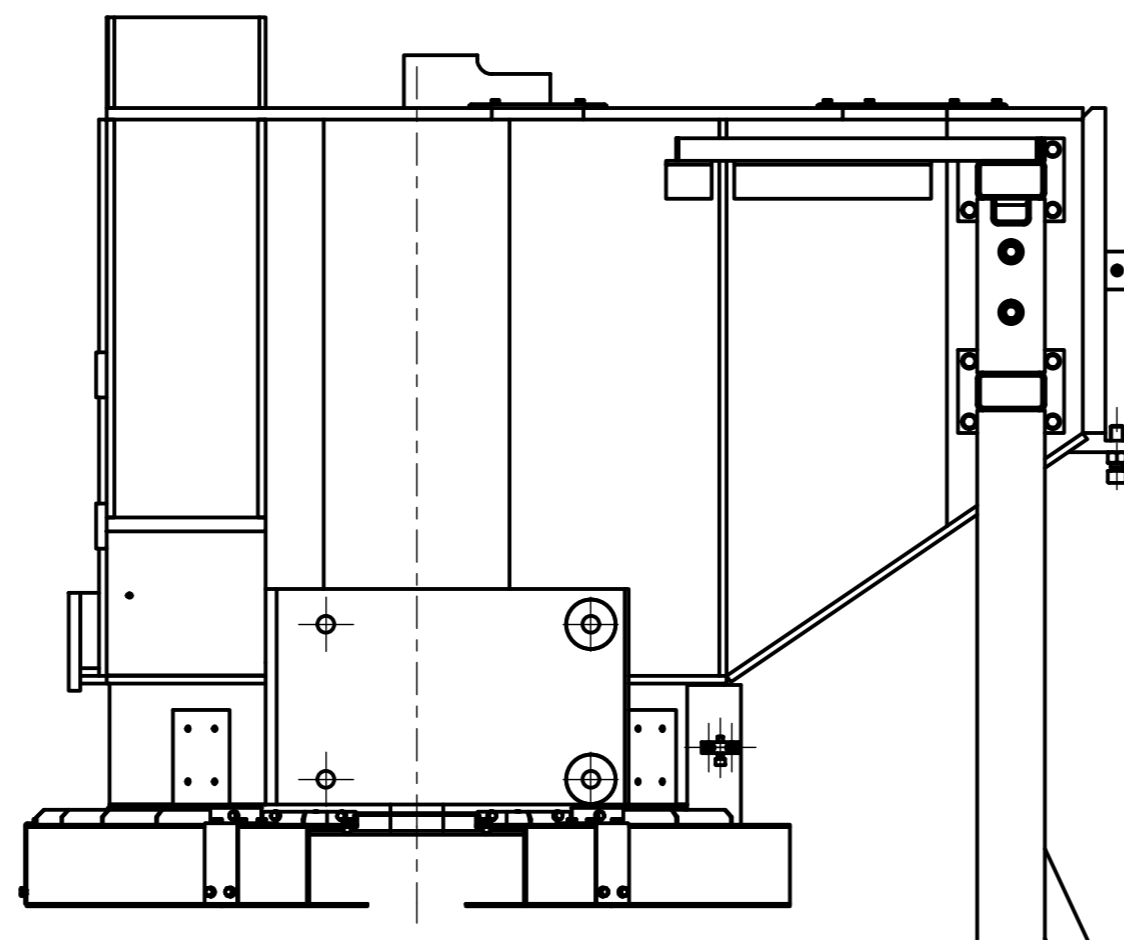
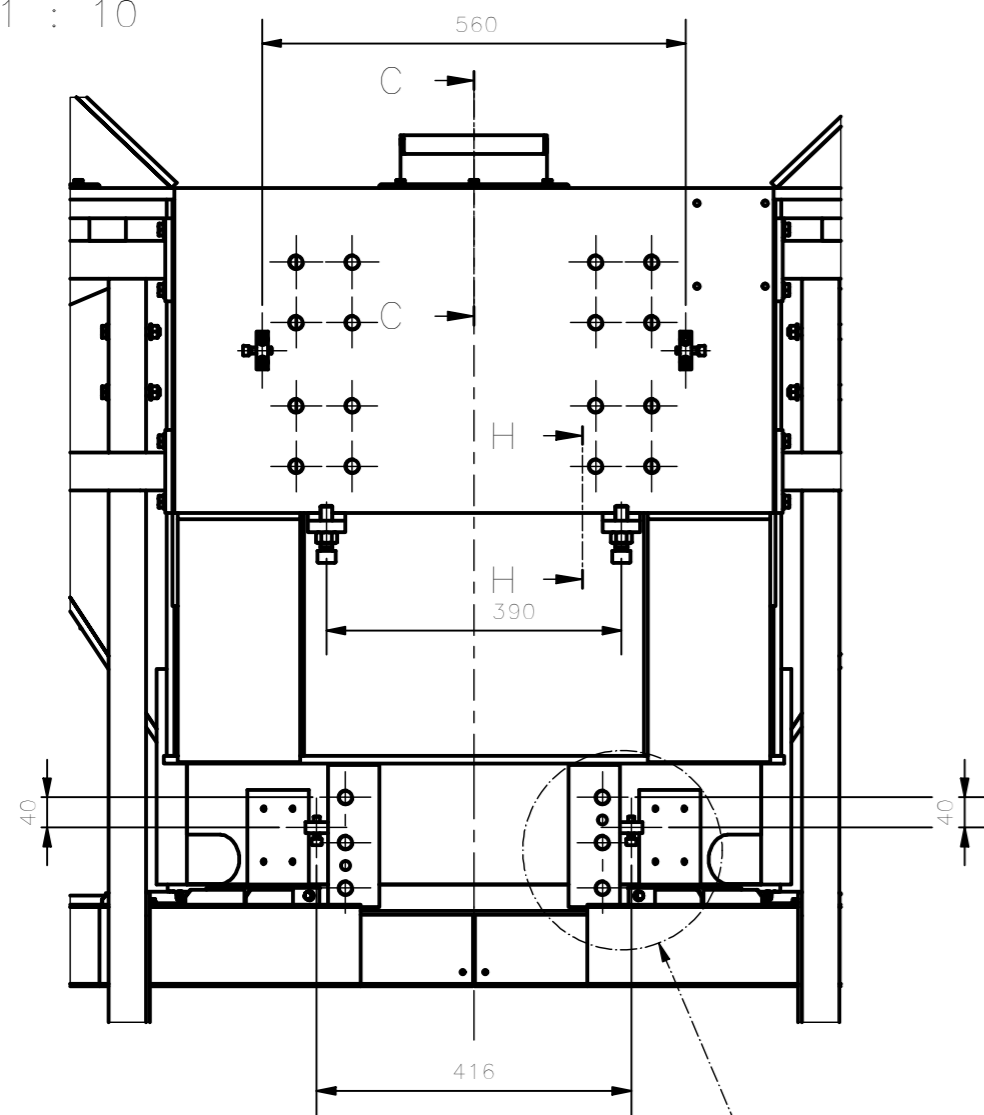


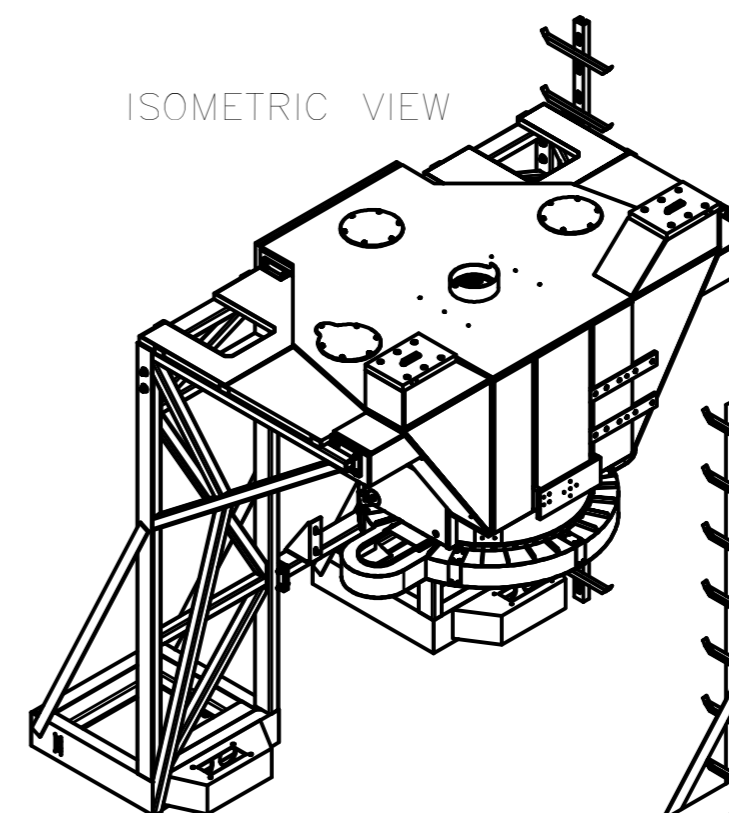
23	ISO 7089 - 6	Plain washers	18	200 HV Electro Galvanized	0,001 kg
22	ISO 4017 - M6 x 20	Hexagon head screws	18	Cl. 8.8 Electro Galvanized	0,007 kg
21	ISO 4762 - M6 x 20	Hexagon Socket Head Cap Screw	2	Cl. 8.8 Electro Galvanized	0,007 kg
20	ISO 4762 - M8 x 16	Hexagon Socket Head Cap Screw	2	Cl. 8.8 Electro Galvanized	0,013 kg
19	ISO 4032 - M8	Hexagon nuts	2	Cl. 8 Electro Galvanized	0,006 kg
18	ISO 4762 - M16 x 60	Hexagon Socket Head Cap Screw	2	Cl. 8.8 Electro Galvanized	0,136 kg
17	ISO 4032 - M16	Hexagon nut	2	Cl. 8 Electro Galvanized	0,039 kg
16	ISO 7089 - 8	Plain washer	2	200 HV Electro Galvanized	0,002 kg
15	ISO 4762 - M8 x 35	Hexagon Socket Head Cap Screw	8	Cl. 8.8 Electro Galvanized	0,021 kg
14	ISO 4762 - M8 x 30	Hexagon Socket Head Cap Screw	4	Cl. 8.8 Electro Galvanized	0,019 kg
13	ISO 4762 - M8 x 25	Hexagon Socket Head Cap Screw	8	Cl. 8.8 Electro Galvanized	0,017 kg
12	ISO 4017 - M8 x 16	Hexagon head screws	2	Cl. 8.8 Electro Galvanized	0,012 kg
11	Spanset 02VB41D-01500	Eye bolt type straight shackles	1	Grade 6 alloy steel quenched & tempered	0,198 kg
10	OBO PROFILE TYPE 2068 L200		1	Construction steel Electro Galvanized	0,155 kg
9	7113-120-00-00	AZ bearing cover	1		24,001 kg
8	7113-110-00-00	Cabinets Support	1		390,280 kg
7	7113-100-07-00	AZ fork special key	2	Construction steel S355J0 EN10027	0,246 kg
6	7113-100-06-00	AZ fork ELA adjuster block	2	Construction steel S355J0 EN10027	0,574 kg
5	7113-100-05-00	AZ Cable wrap support	1	Construction steel S355J0 EN10027	0,643 kg
4	7113-100-04-00	AZ fork hole cover with cave	1	Construction steel S355J0 EN10027	2,042 kg
3	7113-100-03-00	AZ fork adjuster block	4	Construction steel S355J0 EN10027	0,130 kg
2	7113-100-02-00	AZ fork hole cover	2	Construction steel S355J0 EN10027	1,907 kg
1	7113-100-01-00	AZ fork main structure	1	Welded construction steel S355J2G3 EN10027	1110,273 kg
Item	Code	Description	Q.ty	Material	Unit Mass

		EIE GROUP via Torino 151A - Mestre Venezia - 30172 - ITALY tel. +39 041 5317906 - www.eie.it			
Material:		Surface:		Tolerances according to: ISO 2768/1-m ISO 2768/2-k	
Status:		Mass: 1534,51 kg		Roughness: Comnessa/Job no.: G0113	
Designed: 10/04/2018		Date: 04.03.21		Naming: Electro Mechanics	
Checked: 16/04/2018		Name: NAN		Mount Assembly	
Approved: 17/04/2018		Drawing size: A2		AZ fork structure	
Rev. Modification Name Date		Drawing N. 7113-100-00-00		Sheet: 1/2	
ALL RIGHTS BELONG TO EIE GROUP Srl NO COPIES, REPRODUCTION OR DISSEMINATION ARE PERMITTED.		Filename: AZ fork structure.iam			

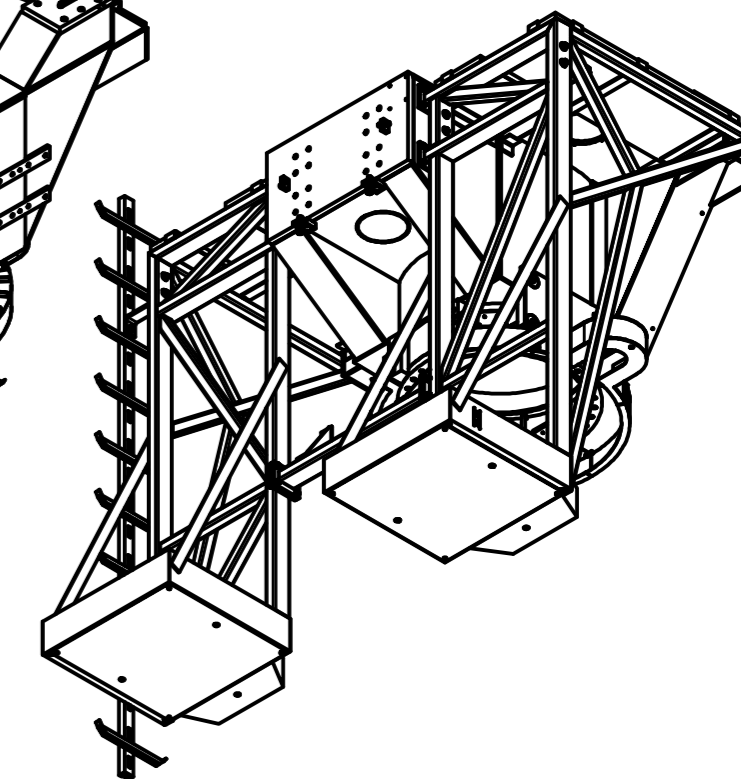
DETAIL-B
1 : 10



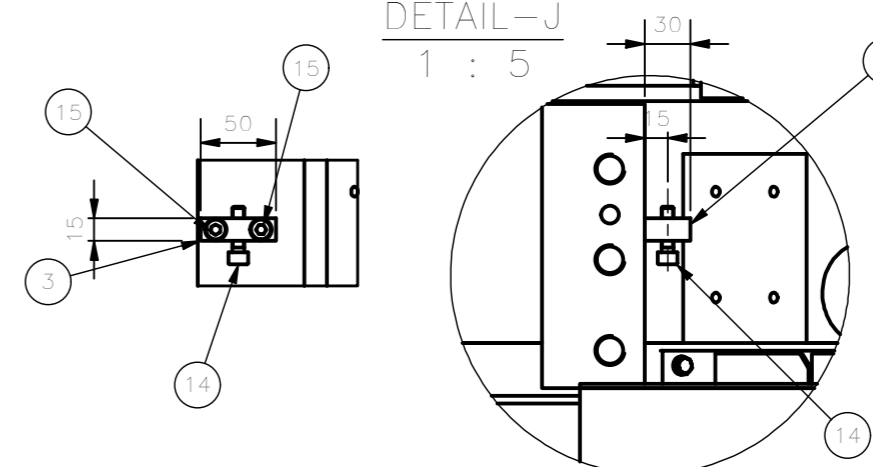
ISOMETRIC VIEW



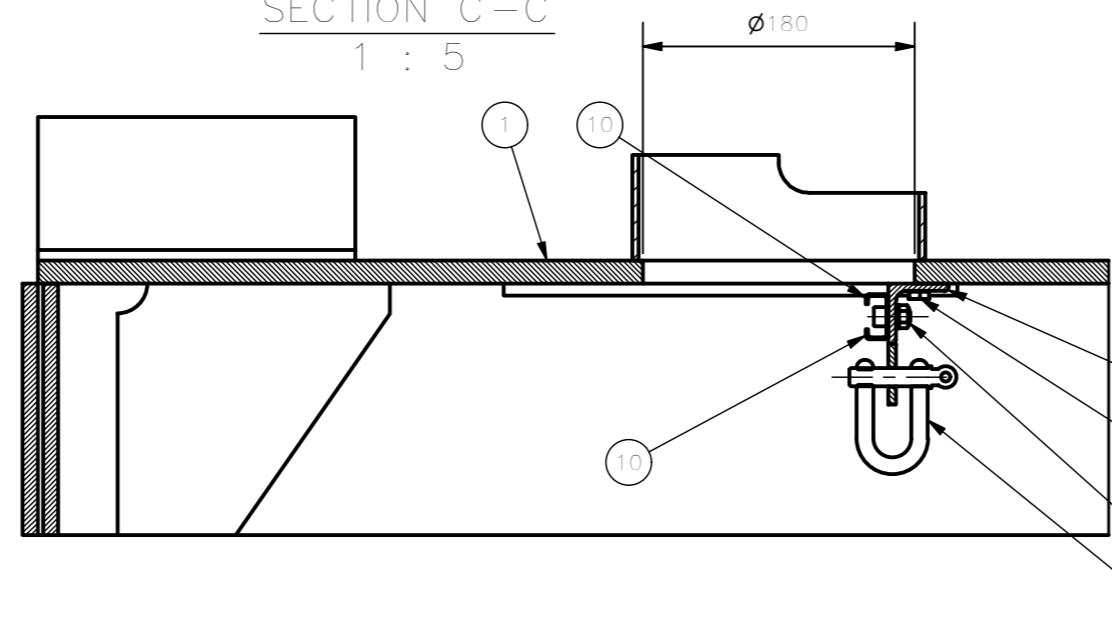
ISOMETRIC VIEW



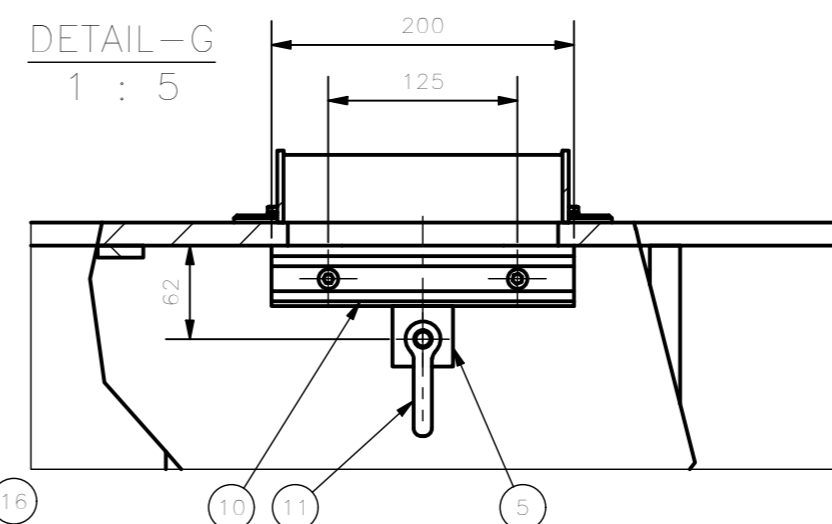
DETAIL-J
1 : 5



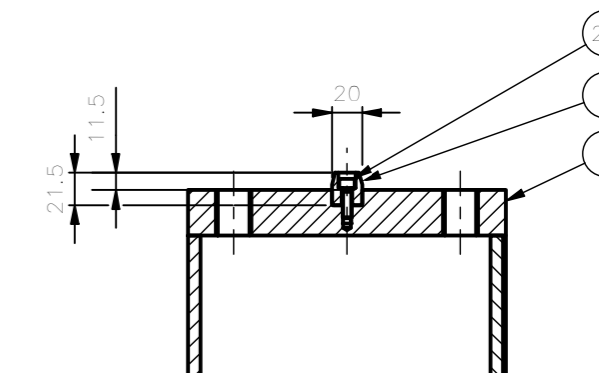
SECTION C-C
1 : 5



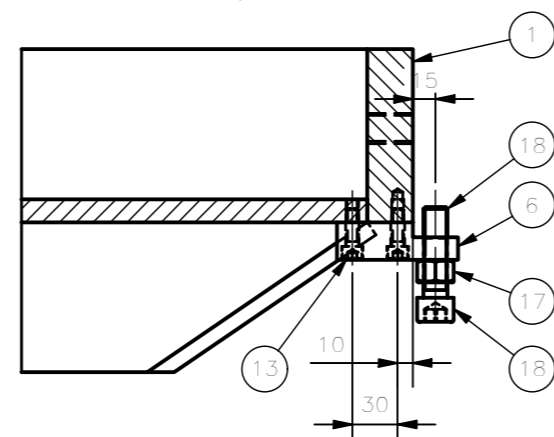
DETAIL-G
1 : 5



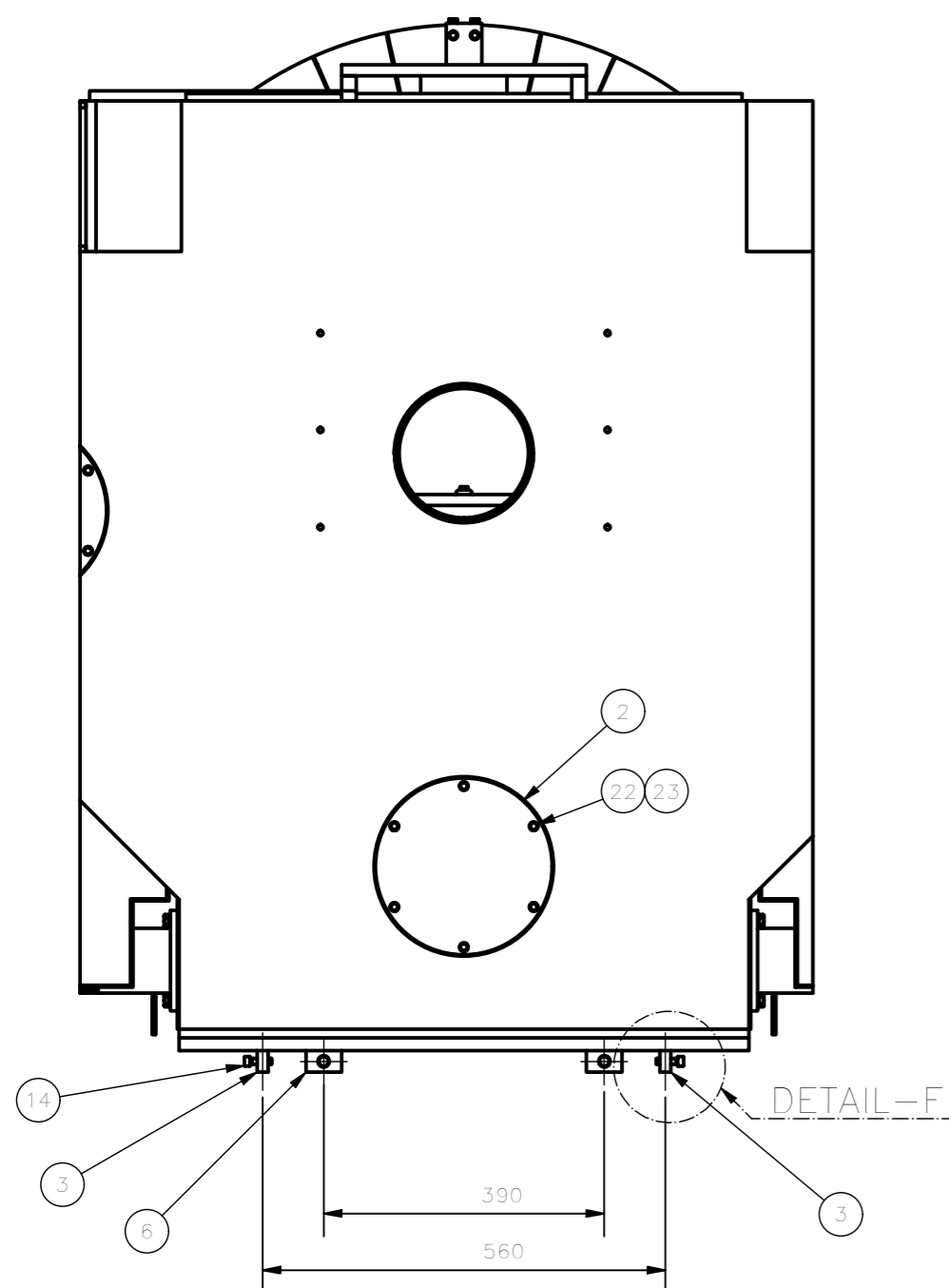
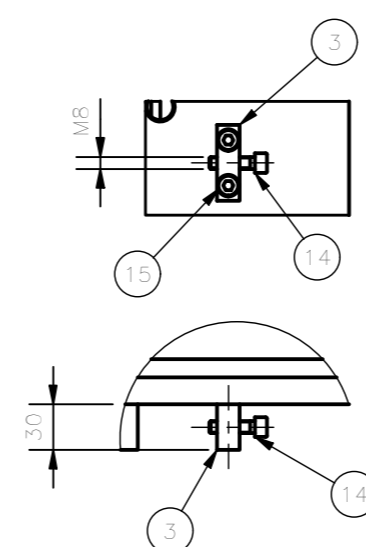
SECTION E-E
1 : 5






SECTION H-H
1 : 5



DETAIL-F
1 : 5



DETAIL-F

 EIE GROUP via Torino 151A - Mestre Venezia - 30172 - ITALY tel. +39 041 5317906 - www.eie.it		 ASTRI mini-array - CTA Small Size Telescope prototypes		 VIEWS AND SECTIONS ARE TO BE WORKED WITH REFERENCE TO EUROPEAN DWG SYSTEM
Material:	Surface:	Tolerances according to: ISO 2768/1-m ISO 2768/2-k	Roughness: Compressa/Job no.: G0113	
Status:	Mass: 1534,51 kg	Scale: 1:10	Naming: Electro Mechanics Mount Assembly AZ fork AZ fork structure	
Designed: 10/04/2018 Checked: 16/04/2018 Approved: 17/04/2018		Date: 04.03.21 Name: NAN Date: 16/04/2018 Name: ABU Date: 17/04/2018 Name: GPM	Drawing N. 7113-100-00-00	
ALL RIGHTS BELONG TO EIE GROUP Srl NO COPIES, REPRODUCTION OR DISSEMINATION ARE PERMITTED.		Drawing size: A2	Sheet: 2 / 2	
Filename: AZ fork structure.iam				