

1

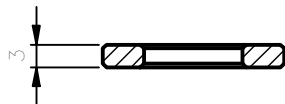
2

3

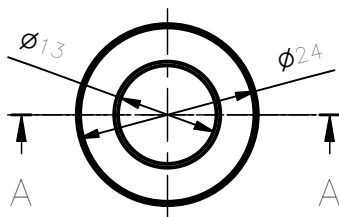
A

SECTION A-A

1 : 1



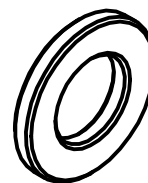
B



A

B

ISOMETRIC VIEW



C

Chamfers non dimensioned are 0.5X45°



C

**EIE GROUP**

via Torino 151A - Mestre
Venezia - 30172 - ITALY
tel. +39 041 5317906 - www.eie.it

**ASTRI mini-array - CTA Small Size Telescope prototypes**

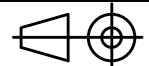
Material:
Construction steel
S355J0 EN10027

Surface:
Galvanized

Tolerances
according to:
ISO 2768/1-m
ISO 2768/2-k

Roughness:

Commissa/Job no.:

G0113

VIEWS AND SECTIONS ARE TO
BE WORKED WITH REFERENCE
TO EUROPEAN DWG SYSTEM

Status:

Mass:
0,01 kg

Scale:
1:1

Naming:
Mount Assembly
Base structure
Base
Door spacer

	Date:	Name:
Designed	10/12/2013	SG
Checked	21/01/2014	AB
Approved	21/01/2014	GPM

Drawing N.

7111-100-10-00

Sheet:
1 / 1

A	First issue	ACA	04.03.21
Rev	Modification	Name	Date

Drawing size: A4

ALL RIGHTS BELONG TO EIE GROUP Srl
NO COPIES, REPRODUCTION OR DISSEMINATION ARE PERMITTED.

Filename: Door spacer.ipt

1

2

3

D

D