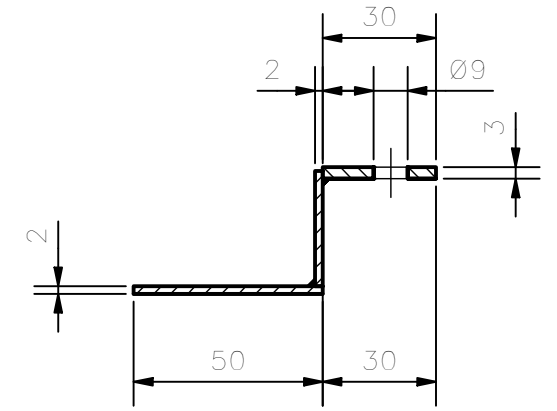
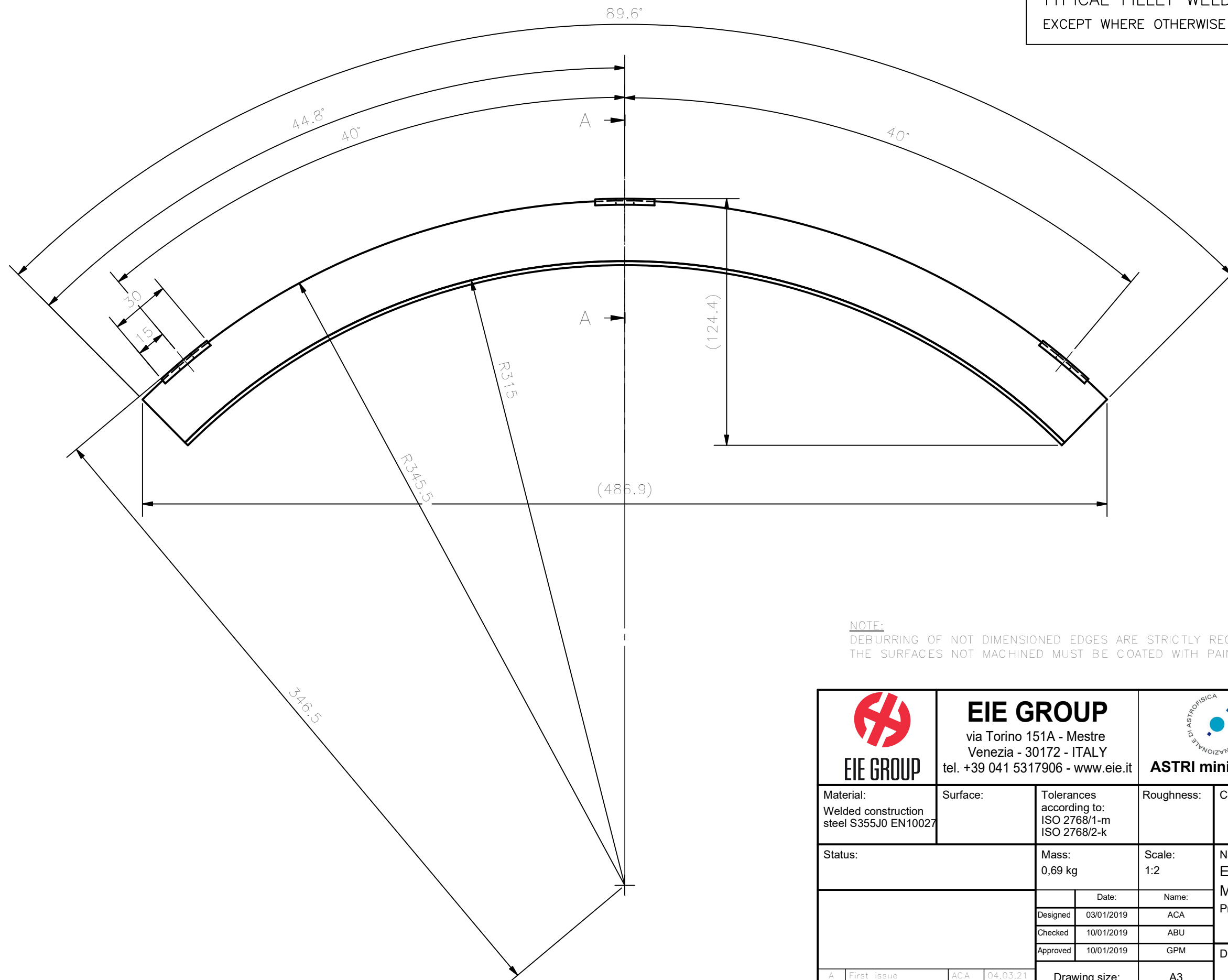
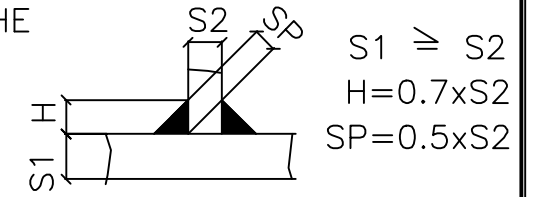


SALDATE D'ANGOLO TIPICHE
 SALVO ECCEZIONI INDICATE
 TYPICAL FILLET WELDS
 EXCEPT WHERE OTHERWISE NOTED



SECTION A-A
 1 : 2

NOTE:
 DEBURRING OF NOT DIMENSIONED EDGES ARE STRICTLY REQUIRED.
 THE SURFACES NOT MACHINED MUST BE COATED WITH PAINTING TYPE RAL 3016.



EIE GROUP
 via Torino 151A - Mestre
 Venezia - 30172 - ITALY
 tel. +39 041 5317906 - www.eie.it



ASTRI mini-array - CTA Small Size Telescope prototypes



Material: Welded construction steel S355J0 EN10027		Surface:		Tolerances according to: ISO 2768/1-m ISO 2768/2-k		Roughness:		Commissa/Job no.:		 <small>VIEWS AND SECTIONS ARE TO BE WORKED WITH REFERENCE TO EUROPEAN DWG SYSTEM</small>
Status:		Mass: 0,69 kg		Scale: 1:2		G0113				
Designed		Date:		Name:		Naming: Electro Mechanics Mount Assembly Protection 01 for strip encoder				
Checked		10/01/2019		ABU		Drawing N.				Sheet: 1 / 1
Approved		10/01/2019		GPM		7110-000-01-00				
A		First issue		ACA		04.03.21		Drawing size:		A3
Rev		Modification		Name		Date		Filename:		Carter 01 for strip encoder.ipt

ALL RIGHTS BELONG TO EIE GROUP Srl
 NO COPIES, REPRODUCTION OR DISSEMINATION ARE PERMITTED.